



# STANDARD FIXING AND FASTENINGS



## SHAKEPROOF WASHER

648NNN

EZ

651NNN

GEOMET

Type		p	Kg / 	Code
Ø 6	100	0,04	648029	
Ø 8	100	0,07	648033	
Ø 10	100	0,13	648030	
Ø 12	100	0,17	648014	

## TOPGRIP SPRING NUT

PS 6 TG	100	3,15	648025	
PS 8 TG	100	3,35	648031	
PS10 TG	100	3,72	648027	
PS12 TG	100	4,40	648013	




## NUT

PS 6 N	100	3,00	648035	651035
PS 8 N	100	3,20	648037	651037
PS 10 N	100	3,60	648038	651038
PS 12 N	100	4,25	648039	651039

## THREADED ROD AND ROD CONNECTOR

644NNN

EZ

Type			daN	p	Kg / 	Code
<b>THREADED ROD</b>						
PS 6 TF			90	10	0,192	644011
PS 8 TF			160	10	0,336	644003
PS10 TF			260	10	0,500	644018
PS12 TF			380	10	0,700	644020
<b>ROD CONNECTOR</b>						
PS 6 MF			90	100	0,004	644012
PS 8 MF			160	100	0,008	644004
PS10 MF			260	100	0,012	644022
PS12 MF			380	100	0,016	644023

646NNN

316 L

## EARTH BI-METALLIC CONNECTOR STF

651NNN

BRASS

STF 6150	6 à 50 mm <sup>2</sup>	25	0,07	651303
STF 6135	6 à 35 mm <sup>2</sup>	25	0,07	651309
STF 6116	6 à 16 mm <sup>2</sup>	25	0,07	651310


## EARTH CONTINUITY CONNECTOR

Type	Kg / p	Code
Earth continuity connector 16mm <sup>2</sup>	0,10	651500

## END CAP

687NNN

PVC

Type		p	Kg / p	Code
PS 6153	50	0,010	687385	
PS 6154	50	0,020	687228	
PS 6155	50	0,005	687230	

## SHAKEPROOF WASHER



## TOPGRIP SPRING NUT

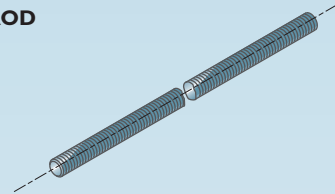
for 41- T-Strut channels



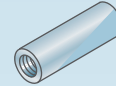
## NUT



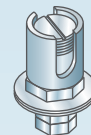
## THREADED ROD Length: 1 M



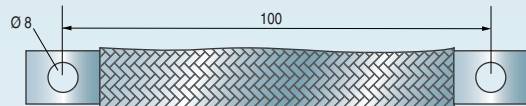
## ROD CONNECTOR



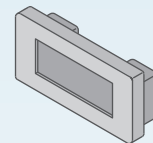
## EARTH BI-METALLIC CONNECTOR STF



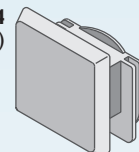
## EARTH CONTINUITY CONNECTOR



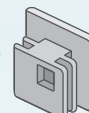
PS 6153  
(41 x 21)



PS 6154  
(41 x 41)



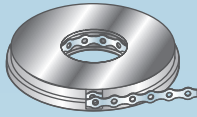
PS 6155  
(25 x 25)





# STANDARD fixing AND FASTENINGS

PS 4300  
PS 4302



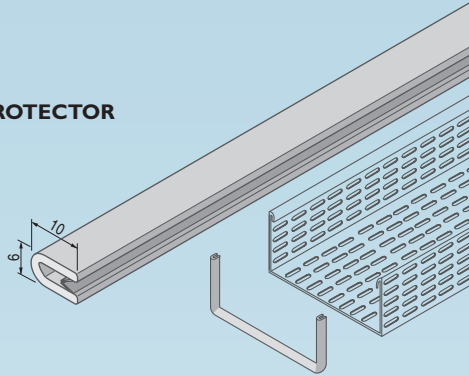
## PS 4300 -PS 4302 PERFORATED STEEL BAND

677NNN

G

Type	Thickness mm	Width mm	Ø mm	ml	Kg /	Code
PS 4301	0,8	12		10	0,54	601326
PS 4300	0,8	17	7	10	0,76	677383
PS 4302	1,0	26	8	10	1,54	677384

## CABLE PROTECTOR



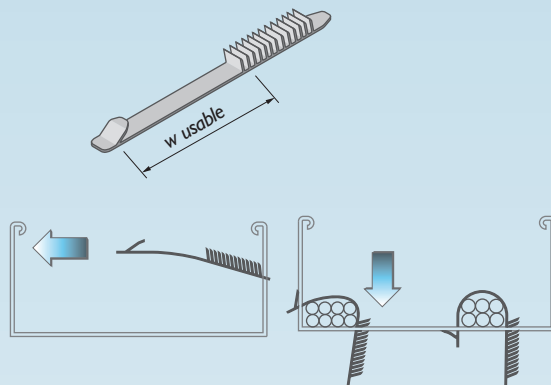
## CABLE PROTECTOR

427NNN

PVC

Type		Kg /	Code
Cable protector	10 m	1,12	427729

## CLIP-ON CABLE TIE



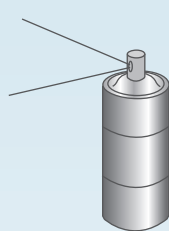
## CLIP-ON CABLE TIE

647NNN

P 6.6

Type	w usable mm	p	Kg /	Code
D 65	65	100	0,20	647300
D 100	100	100	0,26	647301
D 145	145	100	0,36	647302

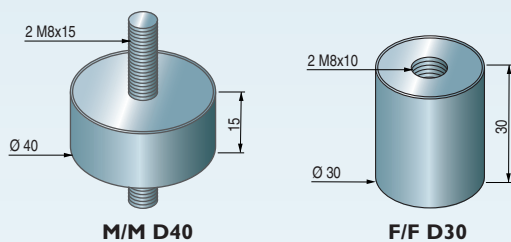
## ZINC PAINT



## ZINC PAINT

Type	p	Kg / p	Code
Zinc paint 500 ml	1	0,44	688001

## ANTIVIBRATION FIXING



M/M D40




F/F D30




## SILENT BLOC

Type	For airconditioning support p. 5-9	p	Kg / p	Code
MIM D40 (4P)		10	0,49	205170
FIF D30 (4P)		10	0,55	205171

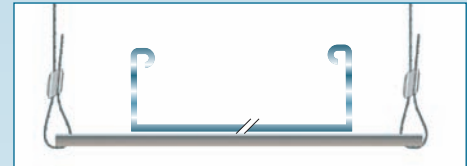
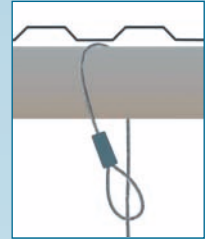
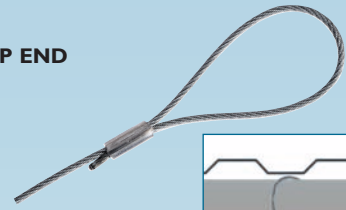
# Grippler HANGERS



Type Loop end	 daN	L mm	 p	Kg / 	Code
HF22FR	45	2000	10	0,60	823000
HF23FR	45	3000	10	0,80	823001
HF25FR	45	5000	10	1,30	823002
HF33FR	90	3000	10	1,30	823003

Type Stud end	 daN	L mm	 p	Kg / 	Code
HF22EF	45	2000	10	0,60	823004
HF23EF	45	3000	10	0,80	823005
HF33EF	90	3000	10	1,30	823006

## LOOP END



## STUD END

